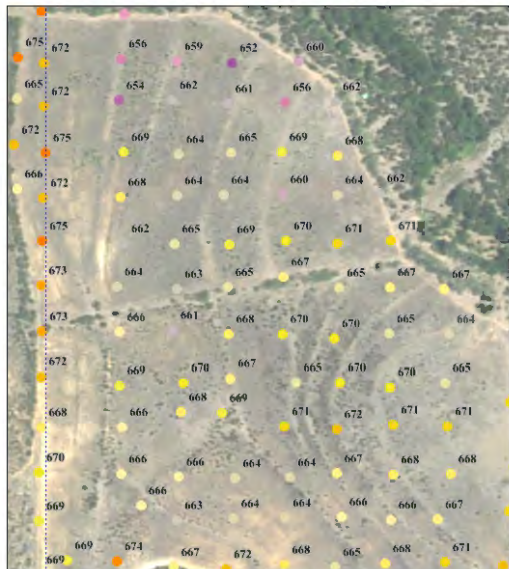


**Hydrocarbon Surveys (HS) is proved up, AGAIN, by a West TX Operator.** This Operator wanted to test our HS system against a shallow well, less than 4K feet, which they planned to drill. Based on other data, they were projecting up to 4 pay zones. **Unfortunately, our HS survey did NOT show any potential, and Senior Bit did not find a single possible producing zone either.**

**COPELAND**  
 REMOTE SENSING, LLC  
 HydrocarbonSurveys.com

HS is a unique and patented  
 OIL & GAS REMOTE SENSING  
 TECHNOLOGY.

**USE HS SURVEYS TO HELP  
 PREVENT DRY HOLES!!!**



Simulated survey area to left, 300 ft grid pattern. Klay noted that the readings' value spread was extremely small, NOT indicating potential oil or gas in the surveyed area.

The HS system gives relative hydrocarbon values DIRECTLY BELOW the point of measurement. It's measurements are REAL TIME.

If you have a waterflood and the water pushes oil out of an area, HS will see the change and help you to design your plan for injector & pumping wells.

If you are researching potential prospects, a **HS road survey** can be very helpful in prioritizing leasing efforts on adjacent areas. Then run grid pattern HS surveys to determine the best places to drill wells.



See real-world CASE STUDIES at [CopelandResources.com/downloads](http://CopelandResources.com/downloads). We have compiled an overall presentation in *CRS Hydrocarbon Surveys Introduction & Capabilities 20250918* PDF, which gives you a general picture of how our system works, as well as several real world examples.

See the *Carter Waterflood & 2 Pay Zone* PDF as our best and highest profitable example. HS results were incorporated by the Operator to completely reverse the direction of a horizontal leg and end up with a payout of less than 3 months. The HS grid pattern survey revealed a cross fault which was previously unknown, as well as other geological features.